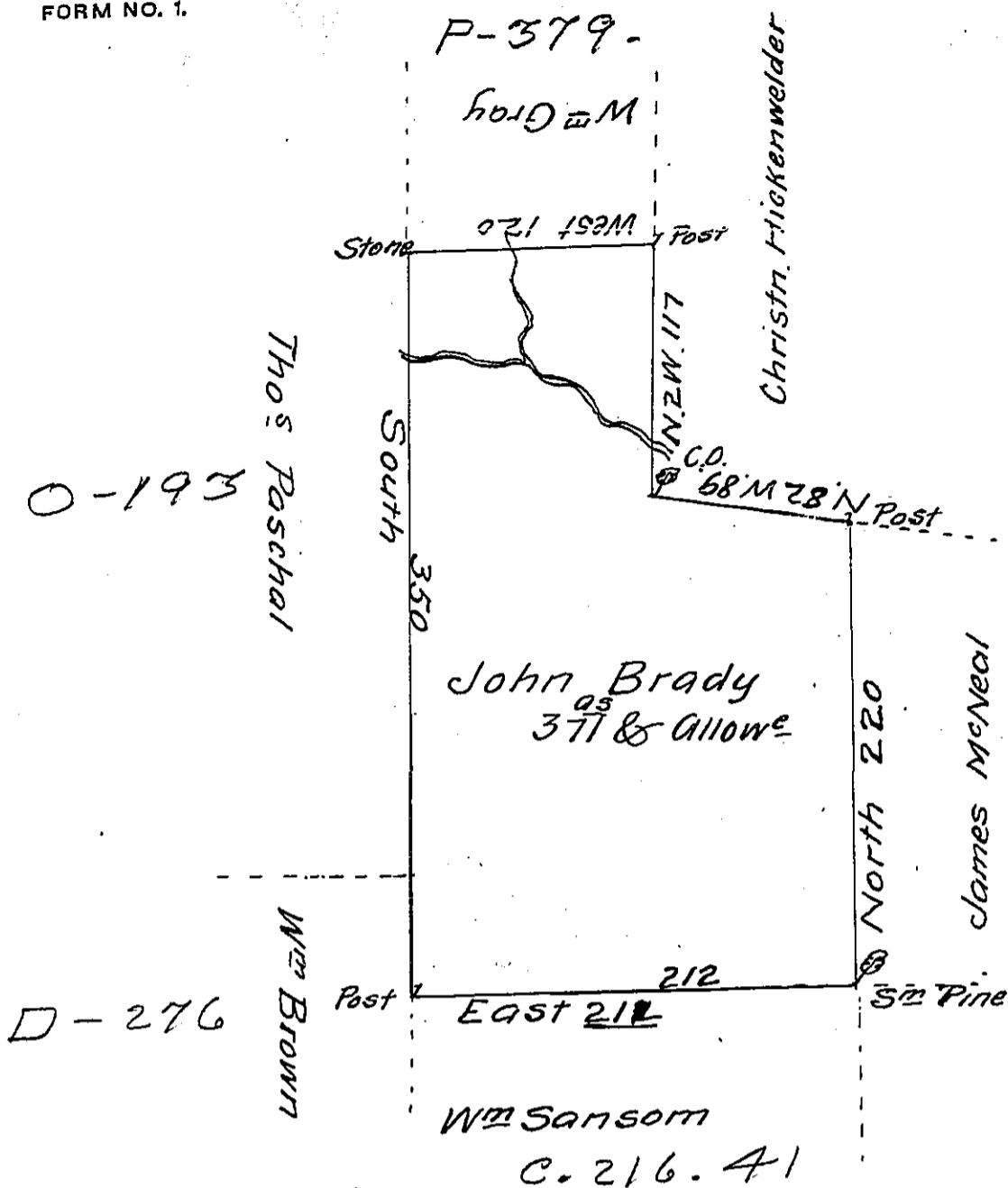


(see P-374)

Foster -  
Luzerne



O-193

D-276

A Draft of a tract of Land called \_\_\_\_\_ situate joining  
 land surveyed for Thomas Paschal in the County of Northum<sup>d</sup>  
 Surveyed for John Brady the 27<sup>th</sup> day of Sept. 1793 by virtue of  
 a warrant dated the 2<sup>d</sup> day of August 1793 containing Three-  
 hundred & seventy one acres & allowance

by W<sup>m</sup> Gray D.S.

Daniel Brodhead Esq<sup>r</sup> }  
 Surv<sup>r</sup>. Gen<sup>l</sup>. }

IN TESTIMONY that the above is a copy of the original remaining on file in  
 the Department of Internal Affairs of Pennsylvania, made  
 conformably to an Act of Assembly approved the 16th day of  
 February, 1833, I have hereunto set my Hand and caused  
 the Seal of said Department to be affixed at Harrisburg,  
 this fourteenth day of October 1911

*Henry Howell,*  
 Secretary of Internal Affairs.